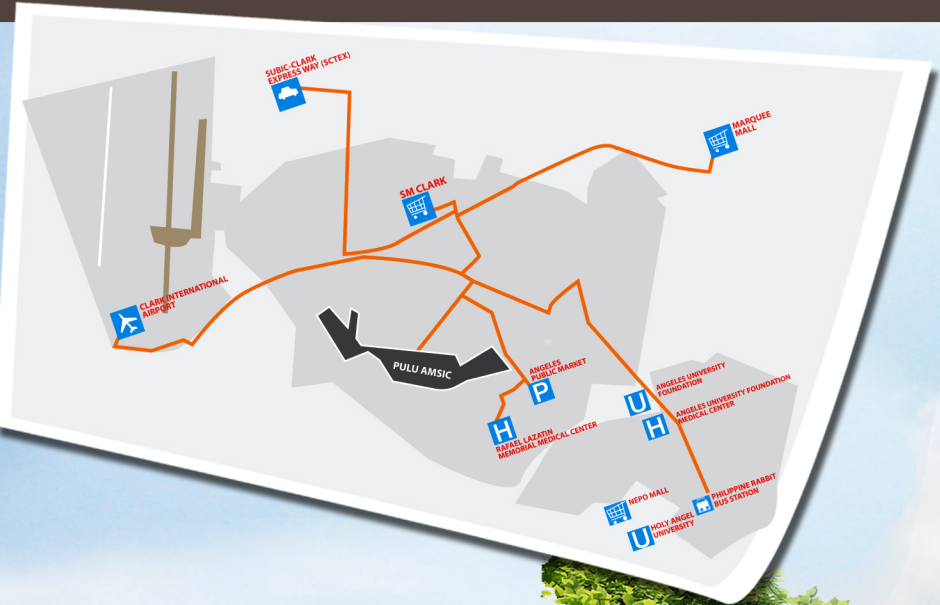


Block 4, Lot 7 Pulu Amsic Subdivision
Angeles City, Pampanga



PEREGRINE[®]
A Knowledge Management Company

www.peregrinedc.com

Peregrine Management L.L.C Inc.
Office 2: Bldg. 7294 C.M. Recto Avenue,
Clark Freeport Zone, Pampanga 2023

For Inquiries please contact:
Renato Sumalde
☎ +63999 888 8886
✉ rsumalde@peregrinedc.com

COMPARABLE PRICING
INCLUSIVE OF LOT & APPLIANCES
PHP 7.6 - 9.0M
 (DEPENDENT ON AMENITIES & LOT)

Exceptional Home Design

Nestled in an exclusive residential estate, a home especially designed to elevate your everyday experiences. Matte finish sandstone tiles in bedroom, living and dining areas; granite countertops; high-end wood kitchen cabinetry and premium bathroom fixtures and fittings. A home to match your urban lifestyle providing modern convenience and comfort.

HOME SPECIFICATIONS:

- 3 BEDROOMS
- 2 FULL BATHS & 2 HALF BATHS
- ENCLOSED AREAS
 GROUND FLOOR: 103.50 SQM
 SECOND FLOOR: 107.47 SQM
- SEMI - ENCLOSED AREAS
 CARPORT : 25.81 SQM
 PATIO : 14.10 SQM
 PORCH ENTRY : 9.22 SQM
 BALCONY : 30.68 SQM
- OPEN AREAS
 LANDSCAPE : 87.41 SQM

TOTAL ENCLOSED AREA: 210.97 SQM
 TOTAL FLOOR AREAS : 290.77 SQM
 LOT AREA : 240.00 SQM

AMENITIES:

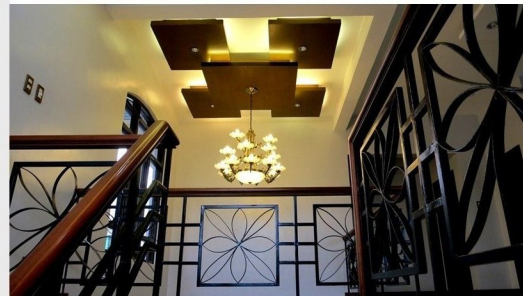
- 11KG HEAVY DUTY DRYER & 10.5KG HEAVY DUTY WASHER
- 6 SQM NOOK BAR (GF) & 12 SQM BAR (2F)
- 21CU FT REFRIGERATOR
- 60 CM RANGEHOOD
- 50" INCH PLASMA TV & 43" INCH PLASMA HOMETHEATER
- 3 TON CASSETTE TYPE INVERTER AIRCON UNIT
- 1 TON WALL MOUNTED SPLIT TYPE AIRCON UNIT
- MULTIPOINT WATER HEATERS
- CUSTOM WOOD WORK THROUGHOUT HOME
- CUSTOM CEILINGS



GROUND FLOOR PLAN



SECOND FLOOR PLAN



A place you can call home...